

3 Bedroom Executive Apartment

€450,000

BOTANIC, Benahavis, Costa del Sol

Ref: ES.BOT.B905

RE/MAX Overseas is delighted to present this amazing 3 bedroom apartment situated in the gated community of Botanic. Botanic is a unique development, created in accordance with the criteria of sustainability, ecology and bioclimatic architecture. The buildings constructed on different ground levels optimize the views and provide an exceptional panorama of the surrounding area. The garden areas are a major part of the design, respecting the variety of species and indigenous trees in the area, with vertical gardens and green corridors that link each of the phases and envelop the residential buildings within a unique natural environment. The development comprises 92 bright and spacious 3 bedroom homes, with incredible large terraces, all south facing. The 4 storey buildings are crowned by...

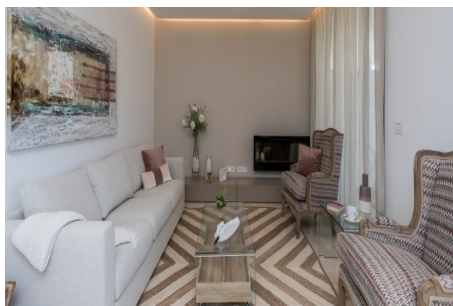
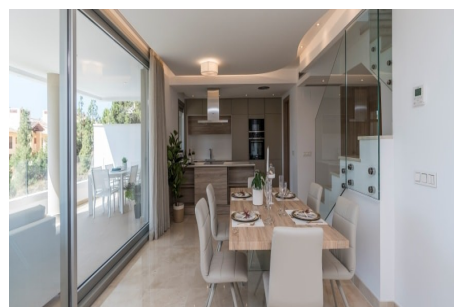
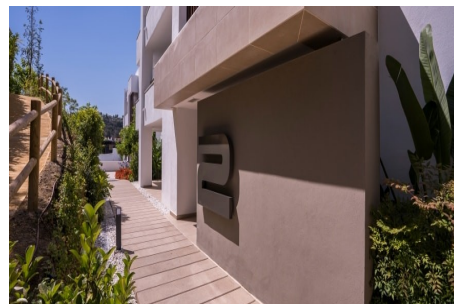
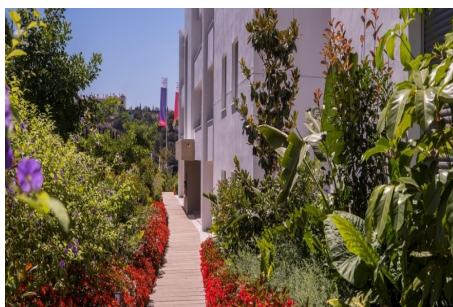
Telephone: +44 (0)330 053 6912

Email: overseas@remax.uk

RE/MAX Overseas 10 King Street Wolverhampton WV1 1ST United Kingdom

RE/MAX
England & Wales
OVERSEAS

Gallery



Telephone: +44 (0)330 053 6912

Email: overseas@remax.uk

RE/MAX Overseas 10 King Street Wolverhampton WV1 1ST United Kingdom

RE/MAX
England & Wales
OVERSEAS

Property Description

Location: Benahavis, Costa del Sol, Spain

RE/MAX Overseas is delighted to present this amazing 3 bedroom apartment situated in the gated community of Botanic.

Botanic is a unique development, created in accordance with the criteria of sustainability, ecology and bioclimatic architecture. The buildings constructed on different ground levels optimize the views and provide an exceptional panorama of the surrounding area. The garden areas are a major part of the design, respecting the variety of species and indigenous trees in the area, with vertical gardens and green corridors that link each of the phases and envelop the residential buildings within a unique natural environment.

The development comprises 92 bright and spacious 3 bedroom homes, with incredible large terraces, all south facing. The 4 storey buildings are crowned by spacious penthouses with a modern design and spectacular solariums from which you can enjoy the views all day long from dawn to dusk.

These homes have been designed with spacious rooms, exceeding the current market standards. The modern distribution integrates the kitchen with the living room and terrace. Private garage space and storage room included.

These homes are delivered fully equipped with high quality modern finishes. Highlights include cream coloured marble throughout, large tiles in the bathrooms, wide patio doors to the terrace, top of the range kitchen appliances and sanitary fittings, LED lighting, air conditioning and heated flooring in bathrooms, all as standard.

Botanic has been created in accordance with the criteria of sustainability and environmentally friendly architecture. These homes have minimal energy consumption and protect the environment by using solar panels, high-quality thermal insulation and sound-proofing and hold a "B" energy certificate.

Telephone: +44 (0)330 053 6912

Email: overseas@remax.uk

RE/MAX Overseas 10 King Street Wolverhampton WV1 1ST United Kingdom



Additional Info

For Sale	Beds: 3	Type: Apartment
Area: 190 sq m	Panoramic Views	Amazing Location
Golf Courses	Gated Community	Security Access
Landscaped Gardens	Swimming Pools	Private Parking

FloorPlans



Telephone: +44 (0)330 053 6912

Email: overseas@remax.uk

RE/MAX Overseas 10 King Street Wolverhampton WV1 1ST United Kingdom

RE/MAX
England & Wales
OVERSEAS