



## 4 Bedroom Executive Penthouse

**€2,956,000**

**THE EDGE, Estepona, Costa del Sol**

**Ref: ES.EDG.0024**

RE/MAX Overseas welcomes you to The Edge, a spectacular residential development directly located on the beach front Estepona. This beautifully designed property faces the sea with direct access to the beach. The areas surrounding the property are pedestrianised for convenience and comfort and the development is exquisitely arranged around a garden, the boundaries of which blend seamlessly with the sand of the beach. The homes offer spacious and bright spaces, open to the landscape, and enjoy views of the sea with absolute privacy. Exceptional design features and qualities include fully equipped Gunni & Trentino fitted kitchens with Corian worktops and top of the range Gaggenau appliances. Large format porcelain flooring with underfloor heating combined with zoned air conditioning crea...

Telephone: +44 (0)330 053 6912

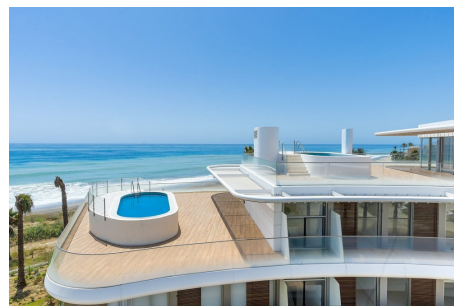
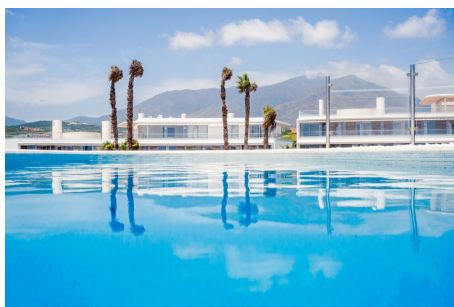
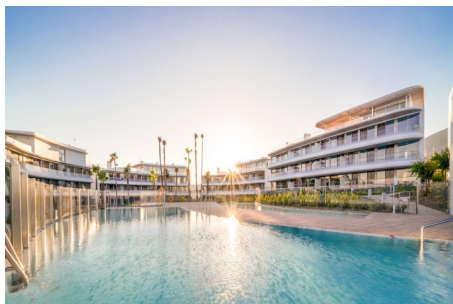
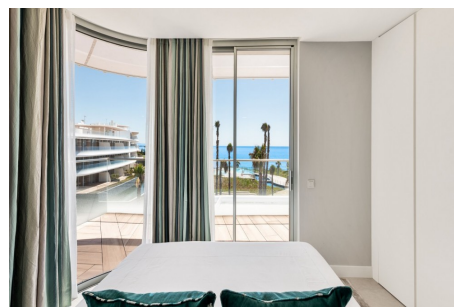
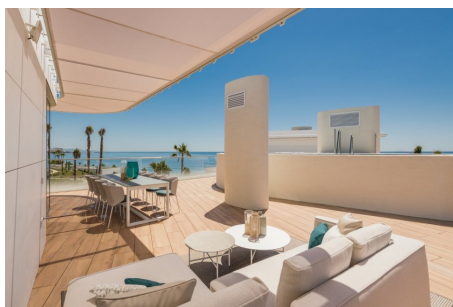
Email: [overseas@remax.uk](mailto:overseas@remax.uk)

RE/MAX Overseas 10 King Street Wolverhampton WV1 1ST United Kingdom

**RE/MAX**  
England & Wales  
*OVERSEAS*



# Gallery



Telephone: +44 (0)330 053 6912

Email: [overseas@remax.uk](mailto:overseas@remax.uk)

RE/MAX Overseas 10 King Street Wolverhampton WV1 1ST United Kingdom

**RE/MAX**  
England & Wales  
*OVERSEAS*

# Property Description

**Location:** Estepona, Costa del Sol, Spain

RE/MAX Overseas welcomes you to The Edge, a spectacular residential development directly located on the beach front Estepona. This beautifully designed property faces the sea with direct access to the beach. The areas surrounding the property are pedestrianised for convenience and comfort and the development is exquisitely arranged around a garden, the boundaries of which blend seamlessly with the sand of the beach. The homes offer spacious and bright spaces, open to the landscape, and enjoy views of the sea with absolute privacy.

Exceptional design features and qualities include fully equipped Gunni & Trentino fitted kitchens with Corian worktops and top of the range Gaggenau appliances. Large format porcelain flooring with underfloor heating combined with zoned air conditioning creates a controllable climate around the whole home, whilst remote controlled electric blinds and awnings, lights, and alarms ensure the owners comfort and safety. Added to this is the security of a gated community with controlled access, ensuring complete peace of mind.

The Edge is located west of the town, less than five minutes from the Estepona marina and just a short distance from the Sotogrande marina, well-known for its gourmet restaurants and leisure activities. There are excellent golfing facilities nearby, Valleromano, El Cortesín or Valderrama Golf. Excellent links with the main AP-7 highway allow easy access to Marbella or Sotogrande, and Malaga International Airport is just a 45 minutes drive with Gibraltar Airport just 20 minutes away.

- Amazing Sea Views– • Private Gated Community– • Security Controlled– • Fully Fitted Kitchens– • Quality Appliances– • Designer Bathrooms– • Underfloor Heating– • Air Conditioning

# Additional Info

For Sale	Beds: 4	Type: Penthouse
Area: 734 sq m	Incredible Penthouse	Top Floor Location
Panoramic Ocean Views	Spacious Accommodation	Over 700 SQ M
4 Large Bedrooms	5 Designer Bathrooms	Massive Outdoor Area
Private Jacuzzi	Private Parking	