



## 3 Bedroom Luxury Apartment

**€587,000**

**JADE TOWER, Fuengirola, Costa del Sol**

**Ref: ES.JT.005N**

Jade Tower is an extraordinary residential complex, of contemporary architecture and sustainable construction. It comprises a total of 116 luxury apartments and penthouses, with garages and storage rooms, only 100 meters from the beach. The modern architecture breaks with the past and bets on innovation and progress. Architecture and construction are work of art, and they both should act as powerful-sources of inspiration for today's society. Jade Tower is set to change the city skyline of Fuengirola and become part of its great community. Along these lines, the Jade Tower project has been carried out using the BIM methodology (Building Information Modelling) that guarantees, among other things, to optimise conservation and future maintenance costs of the building. At Jade Tower, you wi...

Telephone: +44 (0)330 053 6912

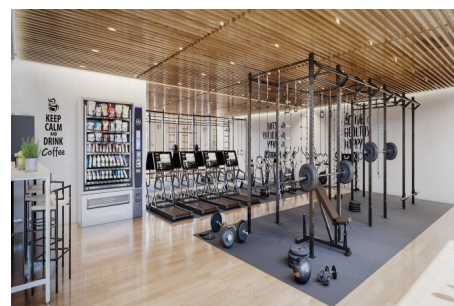
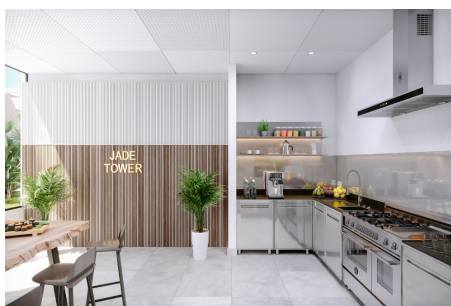
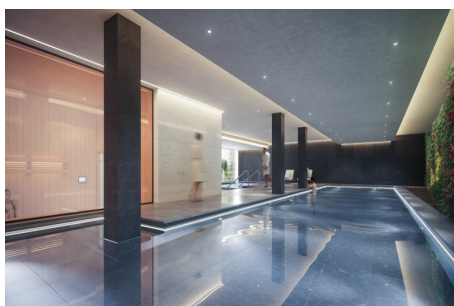
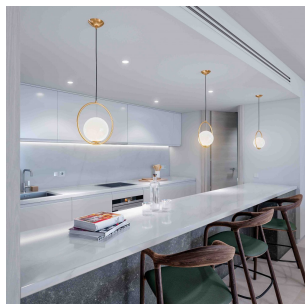
Email: [overseas@remax.uk](mailto:overseas@remax.uk)

RE/MAX Overseas 10 King Street Wolverhampton WV1 1ST United Kingdom

**RE/MAX**  
England & Wales  
*OVERSEAS*



# Gallery



Telephone: +44 (0)330 053 6912

Email: [overseas@remax.uk](mailto:overseas@remax.uk)

RE/MAX Overseas 10 King Street Wolverhampton WV1 1ST United Kingdom

**RE/MAX**  
England & Wales  
*OVERSEAS*

# Property Description

**Location:** JADE TOWER, Fuengirola, Costa del Sol, Spain

**Jade Tower is an extraordinary residential complex, of contemporary architecture and sustainable construction. It comprises a total of 116 luxury apartments and penthouses, with garages and storage rooms, only 100 meters from the beach. The modern architecture breaks with the past and bets on innovation and progress. Architecture and construction are work of art, and they both should act as powerful sources of inspiration for today's society.**

Jade Tower is set to change the city skyline of Fuengirola and become part of its great community. Along these lines, the Jade Tower project has been carried out using the BIM methodology (Building Information Modelling) that guarantees, among other things, to optimise conservation and future maintenance costs of the building.

At Jade Tower, you will truly discover the life you deserve. A selection of modern and smartly designed apartments of 1, 2 and 3 bedrooms, beautifully integrated within the surroundings. The properties stand out for their ample and open spaces, taking full advantage of the natural light. The concept is extended to the outdoor areas, with the large terraces to fully enjoy the Mediterranean climate and lifestyle. Materials and fittings of the highest quality have been handpicked by our design team. Clean lines, kitchen fully fitted with Neff appliances and Silestone worktops, built-in cabinets, full bathrooms with Gunni & Trentino flooring and tiling are some of the examples of the outstanding qualities included at Jade Tower.

Jade Tower provides a unique luxury experience that doesn't stop at your doorstep. Discover the many services it offers exclusively to its residents who will enjoy the luxury of resort-style living every day. In line with the concept of luxurious living, Jade Tower give you access to an array of first-class services and facilities. Your exclusive health club includes a full spa, gym, fitness studio, indoor and outdoor pools.

Telephone: +44 (0)330 053 6912

Email: [overseas@remax.uk](mailto:overseas@remax.uk)

RE/MAX Overseas 10 King Street Wolverhampton WV1 1ST United Kingdom

**RE/MAX**  
England & Wales  
*OVERSEAS*

# Additional Info

For Sale	Beds: 3	Baths: 2
Type: Apartment	Fifth Floor	Prime Location
Large Terraces	Outdoor & Indoor Swimming Pools	Secured Garage
Concierge Services	Close to the Beach	Innovative Architecture
Resident's health Club & Gym	Luxury Spa	Co-working Space
Gastro Bar	Cinema Room	Resident's App
Sustainable Home	Water Filtration Syatem	