



3 Bedroom Frontline Semi-Detached Villa

€222,000

Paradise Beach Cape Verde, Santa Maria, Sal

Ref: CV.PB.FLSD1

The 5* Paradise Beach resort is positioned directly on the beach front, enjoying a tranquil location with extensive sea and landscape views and with direct access to the beautiful Algodoeiro Beach on Sal Island. The Paradise Beach Resort is one of the foremost luxury residential development locations on the island, and in addition is particularly well located between the town of Santa Maria to the south and the holiday village of Murdeira to the north that offer extensive social amenity facilities to residential property owners and occupiers. The Paradise Beach resort comprises luxury villas, penthouse duplex apartments and executive 1 and 2 bedroom apartments. Additional facilities include communal swimming pools and a water sports centre catering for activities such as wind surfing, S...

Telephone: +44 (0)330 053 6912

Email: overseas@remax.uk

RE/MAX Overseas 10 King Street Wolverhampton WV1 1ST United Kingdom

RE/MAX
England & Wales
OVERSEAS

Gallery



Telephone: +44 (0)330 053 6912

Email: overseas@remax.uk

RE/MAX Overseas 10 King Street Wolverhampton WV1 1ST United Kingdom

RE/MAX
England & Wales
OVERSEAS

Property Description

Location: Algodoeiro Beach, Santa Maria, Sal, cape-verde

The 5* Paradise Beach resort is positioned directly on the beach front, enjoying a tranquil location with extensive sea and landscape views and with direct access to the beautiful Algodoeiro Beach on Sal Island.

The Paradise Beach Resort is one of the foremost luxury residential development locations on the island, and in addition is particularly well located between the town of Santa Maria to the south and the holiday village of Murdeira to the north that offer extensive social amenity facilities to residential property owners and occupiers.

The Paradise Beach resort comprises luxury villas, penthouse duplex apartments and executive 1 and 2 bedroom apartments. Additional facilities include communal swimming pools and a water sports centre catering for activities such as wind surfing, scuba diving, deep sea fishing and sailing.

Telephone: +44 (0)330 053 6912

Email: overseas@remax.uk

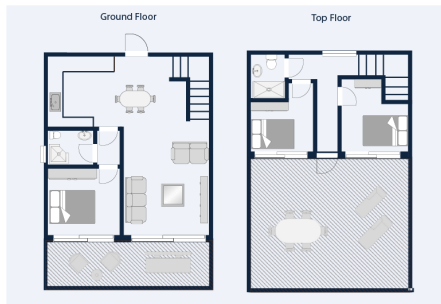
RE/MAX Overseas 10 King Street Wolverhampton WV1 1ST United Kingdom

RE/MAX
England & Wales
OVERSEAS

Additional Info

For Sale	Beds: 3	Baths: 2
Type: Semi-Detached House	Area: 176 sq m	Frontline Semi-Detached Villa
66 sq m of Terraces	Communal Pool	West Facing

FloorPlans



Telephone: +44 (0)330 053 6912

Email: overseas@remax.uk

RE/MAX Overseas 10 King Street Wolverhampton WV1 1ST United Kingdom

RE/MAX
England & Wales
OVERSEAS