



## 5 Bedroom Gorgeous House

€1,731,660

Ref: USA.FL.5BH

Low Inventory and high demand!. This well maintained real estate gem, with tons of charm and character is a 5br plus office and 3br Mediterranean style 2 story home located in the middle of a quite death-end street in lake estate. The Impressive hallway brings you to a wide open living and entertaining area with high 8,9 food ceilings and open kitchen concept. Impressive views form multiple windows to the canal and 3 balconies let you enjoy sunrise and sunset from all angles. The south exposure of the Tropical backyard guaranty full enjoyment of direct sun on the fabulous pool and Jacuzzi . Great layout for any-kind of inside and outside entertaining with a beautiful boat deck direct on the water. Beautiful nature grass area,Papaya trees surrounded from palm trees,just beautiful botanic.

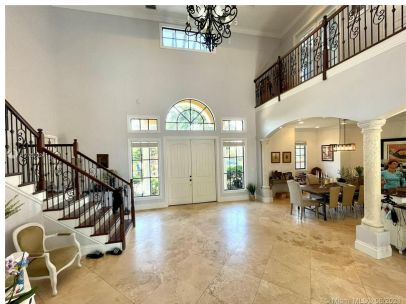
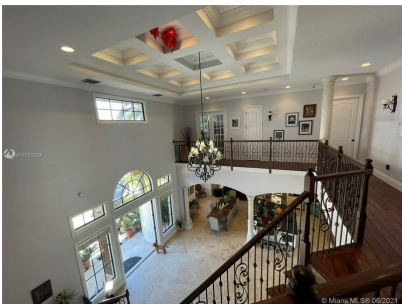
Telephone: +44 (0)330 053 6912

Email: [overseas@remax.uk](mailto:overseas@remax.uk)

RE/MAX Overseas 10 King Street Wolverhampton WV1 1ST United Kingdom

**RE/MAX**  
England & Wales  
*OVERSEAS*

# Gallery



Telephone: +44 (0)330 053 6912

Email: [overseas@remax.uk](mailto:overseas@remax.uk)

RE/MAX Overseas 10 King Street Wolverhampton WV1 1ST United Kingdom



# Property Description

**Location:** Global

**Low Inventory and high demand!. This well maintained real estate gem, with tons of charm and character is a 5br plus office and 3br Mediterranean style 2 story home located in the middle of a quite death-end street in lake estate.** The Impressive hallway brings you to a wide open living and entertaining area with high 8,9 food ceilings and open kitchen concept. Impressive views form multiple windows to the canal and 3 balconies let you enjoy sunrise and sunset from all angles. The south exposure of the Tropical backyard guaranty full enjoyment of direct sun on the fabulous pool and Jacuzzi . Great layout for any-kind of inside and outside entertaining with a beautiful boat deck direct on the water. Beautiful nature grass area,Papaya trees surrounded from palm trees,just beautiful botanic.

---

Telephone: +44 (0)330 053 6912

Email: [overseas@remax.uk](mailto:overseas@remax.uk)

RE/MAX Overseas 10 King Street Wolverhampton WV1 1ST United Kingdom

**RE/MAX**  
England & Wales  
*OVERSEAS*

# Additional Info

For Sale	Beds: 5	Baths: 3
Type: House	Area: 4337 sq m	Beautiful Interior
Swimming Pool	Amazing Views	

Telephone: +44 (0)330 053 6912

Email: [overseas@remax.uk](mailto:overseas@remax.uk)

RE/MAX Overseas 10 King Street Wolverhampton WV1 1ST United Kingdom

**RE/MAX**  
England & Wales  
*OVERSEAS*