



3 Bedroom House

Cape Town, Cape Town

€665,652

Ref: CT.-2135877

Set against the slopes of Table Mountain surrounded by lush vegetation, gracious oak and camphor tree's and sweeping panoramic vistas lies this idyllically located property of over 4 000m2 on the elite, Klaassens road. A discerning 3 bedroom, double storey home with a separate, self contained cottage. This unique, agriculturally zoned property has limitless potential with incredible all around mountain views or, it is perfect to move straight into and start breathing in your surrounds and become one with nature. House is equipped with a borehole and 4 Inverters for backup power during load shedding and secure parking for 8 cars.

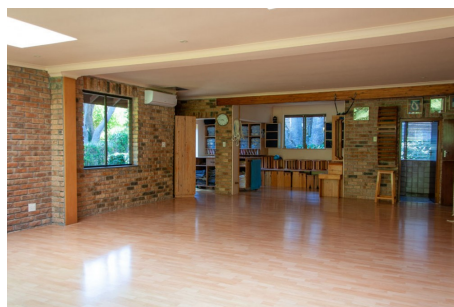
Telephone: +44 (0)330 053 6912

Email: overseas@remax.uk

RE/MAX Overseas 10 King Street Wolverhampton WV1 1ST United Kingdom

RE/MAX
England & Wales
OVERSEAS

Gallery



Telephone: +44 (0)330 053 6912

Email: overseas@remax.uk

RE/MAX Overseas 10 King Street Wolverhampton WV1 1ST United Kingdom

RE/MAX
England & Wales
OVERSEAS

Property Description

Location: Cape Town, Cape Town, south-africa

Set against the slopes of Table Mountain surrounded by lush vegetation, gracious oak and camphor tree's and sweeping panoramic vistas lies this idyllically located property of over 4 000m² on the elite, Klaassens road.

A discerning 3 bedroom, double storey home with a separate, self contained cottage. This unique, agriculturally zoned property has limitless potential with incredible all around mountain views or, it is perfect to move straight into and start breathing in your surrounds and become one with nature.

House is equipped with a borehole and 4 Inverters for backup power during load shedding and secure parking for 8 cars.

Telephone: +44 (0)330 053 6912

Email: overseas@remax.uk

RE/MAX Overseas 10 King Street Wolverhampton WV1 1ST United Kingdom

RE/MAX
England & Wales
OVERSEAS

Additional Info

For Sale	Beds: 3	Baths: 4
Type: House	Area: 296 sq m	Land Area: 4052 sq m
Uncovered Parking	Backup Battery	Garden