



## 1 Bedroom Apartment

**Mandria Gardens, Mandria, Paphos**

# €179,000

**Ref: CY.MAG.1-102/08**

This 1 bedroom apartment is located in an exceptional seafront development that offers one and two-bedroom apartments and penthouses, and three-bedroom detached villas. There are two communal swimming pools (one of which is heated during the winter months), set in beautiful and spacious landscaped gardens. The project also features a private clubhouse for residential use. The traditional styles, fixtures and finishes have been carefully selected to retain the charm and authenticity of the region. Mandria Gardens offers exceptional value for money, particularly for those wanting to invest in property as a primary, secondary or buy-to-let investment that is close to golf resorts, hotels, amenities, services, places of interest, and centrally located between Paphos and Limassol.

Telephone: +44 (0)330 053 6912

Email: [overseas@remax.uk](mailto:overseas@remax.uk)

RE/MAX Overseas 10 King Street Wolverhampton WV1 1ST United Kingdom

**RE/MAX**  
England & Wales  
*OVERSEAS*

# Gallery



Telephone: +44 (0)330 053 6912

Email: [overseas@remax.uk](mailto:overseas@remax.uk)

RE/MAX Overseas 10 King Street Wolverhampton WV1 1ST United Kingdom



# Property Description

**Location:** Mandria, Paphos, cyprus

This 1 bedroom apartment is located in an exceptional seafront development that offers one and two-bedroom apartments and penthouses, and three-bedroom detached villas.

There are two communal swimming pools (one of which is heated during the winter months), set in beautiful and spacious landscaped gardens. The project also features a private clubhouse for residential use.

The traditional styles, fixtures and finishes have been carefully selected to retain the charm and authenticity of the region.

Mandria Gardens offers exceptional value for money, particularly for those wanting to invest in property as a primary, secondary or buy-to-let investment that is close to golf resorts, hotels, amenities, services, places of interest, and centrally located between Paphos and Limassol.

---

Telephone: +44 (0)330 053 6912

Email: [overseas@remax.uk](mailto:overseas@remax.uk)

RE/MAX Overseas 10 King Street Wolverhampton WV1 1ST United Kingdom

**RE/MAX**  
England & Wales  
*OVERSEAS*

# Additional Info

For Sale	Beds: 1	Baths: 1
Type: Apartment	Area: 55 sq m	En-suite bathrooms
Swimming Pool	Air Conditioning	Central Heating
Safe & Friendly Area	Landscaped Gardens	Private Parking
Covered Veranda		

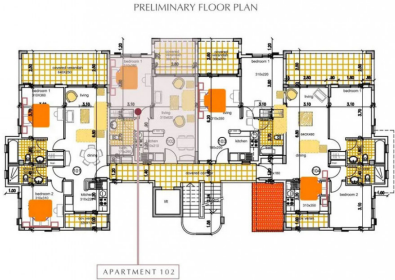
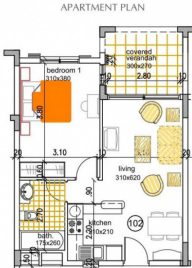
Telephone: +44 (0)330 053 6912

Email: [overseas@remax.uk](mailto:overseas@remax.uk)

RE/MAX Overseas 10 King Street Wolverhampton WV1 1ST United Kingdom

**RE/MAX**  
England & Wales  
*OVERSEAS*

# FloorPlans



Telephone: +44 (0)330 053 6912

Email: [overseas@remax.uk](mailto:overseas@remax.uk)

RE/MAX Overseas 10 King Street Wolverhampton WV1 1ST United Kingdom

